

Classic Roman Blind Headrail

Fitting, operation and maintenance instructions

Warning! The operating instructions must be read before operating the blind.

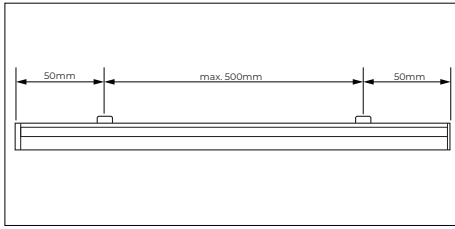
Fitting Instructions for Classic Roman Blind Headrail | Top-fix and face-fix installation

Swivel Bracket

This procedure can be completed by non-professionals.

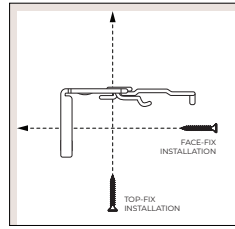
Step 1 - Position the brackets

Ensure that each supplied bracket is positioned at least 50 mm from each end of the headrail, with any remaining brackets spaced no more than 500 mm apart. Check that all brackets are aligned evenly before securing them in place.



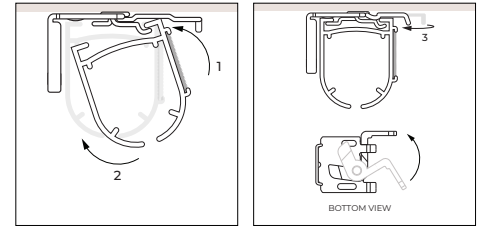
Step 2 - Mark, drill, and secure the brackets

If necessary, mark the screw positions by pencil through the bracket slots. Drill and plug the holes as required, then fix the brackets securely using appropriate fittings. (Please note that screws and fixings are not supplied).



Step 3 - Install the headrail

Once the brackets are securely fixed, remove the headrail from its packaging and carefully clip it into the brackets, then close the bracket lever to ensure that it is firmly secured in place.



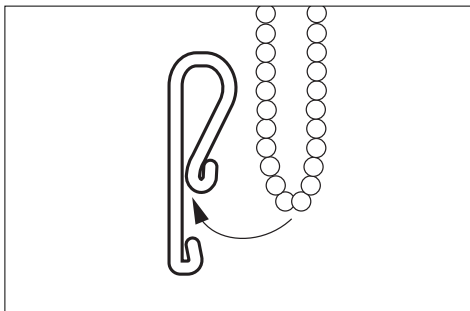
Note: If your Roman headrail is supplied with an alternative bracket type, please refer to the fitting instructions available on our website by scanning the QR code.

Fitting the safety device: 'P' Clip 400990

This procedure can be completed by non-professionals.

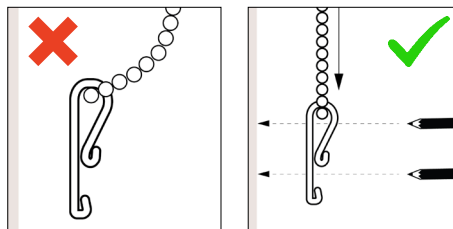
Step 1 - Attach the 'P' Clip to the Chain

Once the blind is securely fitted, attach the 'P' Clip to the control chain.



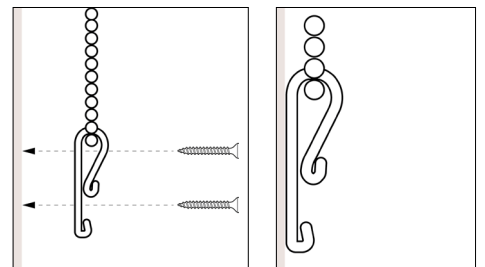
Step 2 - Mark fixing points

Pull the chain and cord taut with the device, placing it as far from the control mechanism as possible. This keeps the controls tight, preventing slack and enhancing child safety. Once positioned, mark through the screw holes to indicate where the device will be fixed.



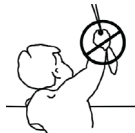
Step 3 - Secure the Device

Move the device to one side and, using the marks made in Step 2, drill and plug the holes. Then reposition the device and fix it into place, ensuring it is securely mounted.



Note: If your blind has been supplied with a different safety device, please refer to the specific installation instructions available on our website for that device - www.decorquip.com

⚠ WARNING ⚠



Young children can be strangled by loops in pull cords, chains, tapes and inner cords that operate the product.

To avoid strangulation and entanglement, keep cords out of the reach of young children. Cords may become wrapped around a child's neck.

Move beds, cots and furniture away from window covering cords.

Do not tie cords together. Make sure cords do not twist and create a loop.

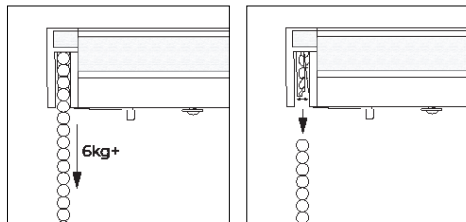
Always fit the chain and rear cord safety devices.

Roman Headrail with Elite Breakaway Mechanism | Returning chain instructions

This procedure can be completed by non-professionals.

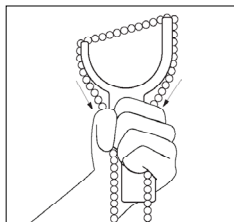
Chain breaks away

The mechanism is designed to release the chain when a force of **6 kg or greater** is applied.



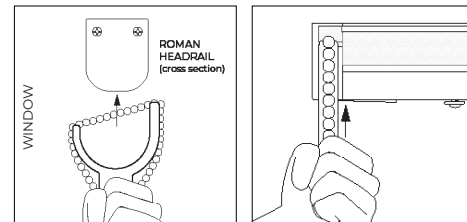
Step 1 - Mount the chain on the tool

Place the detached chain onto the Chain Replacement Tool. Hold the tool handle firmly while keeping the chain tight to ensure proper alignment and tension before reinstallation.



Step 2 - Reinstall the chain

Carefully guide the chain into the mechanism by pushing it into the chain cog. Continue until you feel or hear a distinct click, confirming that the chain is fully seated and locked in place.



Operation & Maintenance

Warning! The operating instructions must be read before operating the blind.

Operating instructions - Chain controlled

1. Ensure the headrail and fabric are free of obstructions.
2. Gently pull the chain up or down to close or open the blind.

Operating instructions - Motorised

1. Ensure the headrail and fabric are free of obstructions.
2. Use the supplied control device to operate the blind electronically. For detailed information on operating modes, please refer to the Motorisation Instructions supplied with this blind before use.

Maintenance Instructions

This product is designed to be maintenance-free; however, we recommend carrying out regular visual inspections to ensure that no components are damaged, as this could lead to operating difficulties or pose a safety risk. If any maintenance is required, it should be completed promptly by a reputable blind company.

For light cleaning, gently wipe or dust the fabric with a soft brush or duster.

For safety and performance, do not make alterations to the blind, chain, or safety device.